

Elevator Air Conditioner Installation and User's Guide

A-2000 (5.800 Btu/h)

A-4000 (12.600 Btu/h)

www.asansorklimasi.com

www.uludagklima.com

info@uludagklima.com

Tel : +90 224 243 70 71

Faks: +90 224 243 88 96

PRODUCT DESCRIPTION:

To reduce the temperature of the cabin and ensure the comfort of users , our company has developed and produced elevator air conditioners.

When you get into the elevator the first feel is that the ambient temperature is lower than outside. After confucion, a smile appears on your face and you will look where the cool air coming from the short lived trip ended. If you want to impress users in a positive way, you've reached your goal.

Technical Specifications	A-4000	A-2000
Voltage	380 V.	220 V. A.C.
Cooling Capacity	12.600 Btu/h	5.800 Btu/h
Height / width / depth	700 x 420 x 400	590 x 410 x 320
Refrigerant Gas (R134A)	1150 g	850 g
Indoor Unit Fan Flow	1170	575
weight	49 Kg	33 Kg

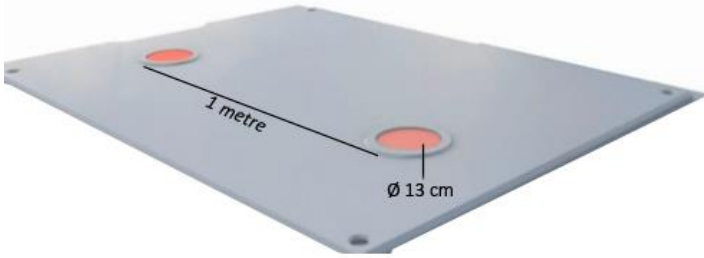


ELEVATOR AIR CONDITIONER SPECIFICATIONS

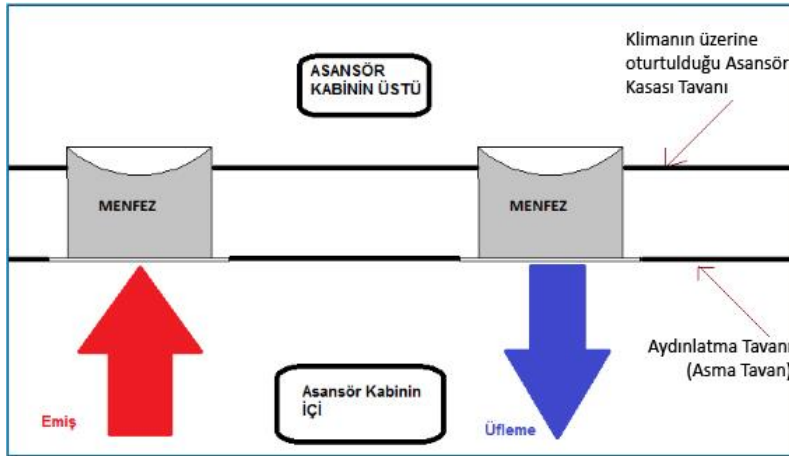
- Without drainage. Water that formed being evaporated in the system.
- Car temperature can be set to the desired value with a digital thermostat, and you'll be one step ahead in the race to serve customers better.
- Air-condition unit is mounted on top of the elevator car. Installation duration is just 15 minutes.
- For installation all you have to do is to open two holes to the ceiling of the elevator for the suction and blowing.
- Installation ends by mounting the culverts to the lighting fixtures which are mounted on the ceiling plate.
- Provide power to the device, the cooler is sufficient to operate for years without any problem.
- Temperature control unit is mounted to the cooler.

INSTALLATION

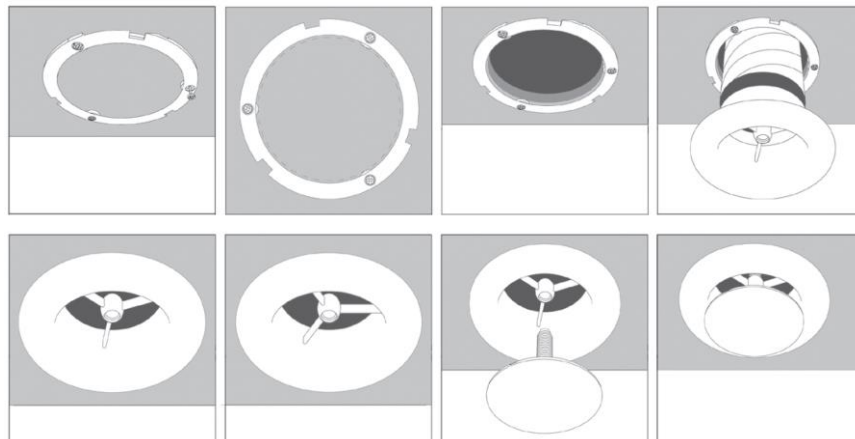
1. Seat the air conditioner to the appropriate place on top of the elevator car. (Indicated by the arrow facing up on the air conditioner.)
2. Drill at least 1 meter far from each other and concentric circles to the elevator car and lithing ceiling in 130 mm diameter.



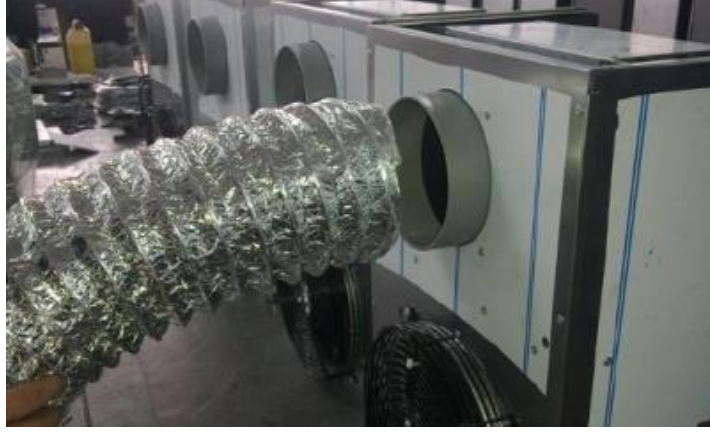
3. Install the spring culverts which sent collectively with the air conditioner from inside of the elevator car to the holes that drilled before. Fix the culverts with help of the springs.



Installation AIR DISC VALVES



4. Install the two flexible hoses one ends wich sent collectively with the air conditioner to the two conduits on the air conditioner and other ends to the culverts by passing trough the holes that drilled before. (For air transfere between elevator car and air conditioner.) **Install the insulated hose to the blowing conduit.**



5. Air conditioner evaporates the condense water which caused by cooling with help of it's evaporation pan. But there is a drainage conduit for security purpose to prevent water leakage in case of a mallfunction. Install the transparent drainage hose which sent collectively with the air conditioner to the drainage conduit where exists on the side of the air conditioner. Dangle the other end of the hose to the underside of the car.

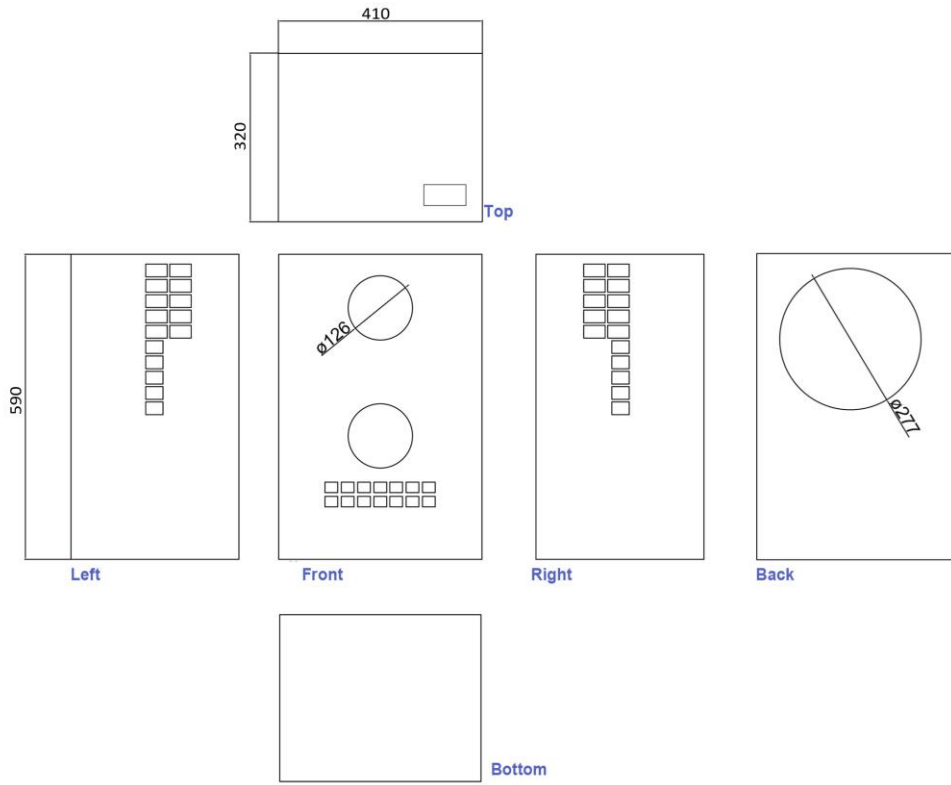


6. Once the mechanical installation process over, supply power with TTR cable in 3X1 diameter on top of the elevator car from an independent power supply. Install a 10 Ampere contactor just behind the power feeder. Install the power cable which sent collectively with the air conditioner to the existing socket on top of the air conditioner. Plug the other end of the power cable to the 220 Volt electricity with 10 ampere contactor.

Installation process completed with air conditioner set 21 degrees

www.asansorklimasi.com

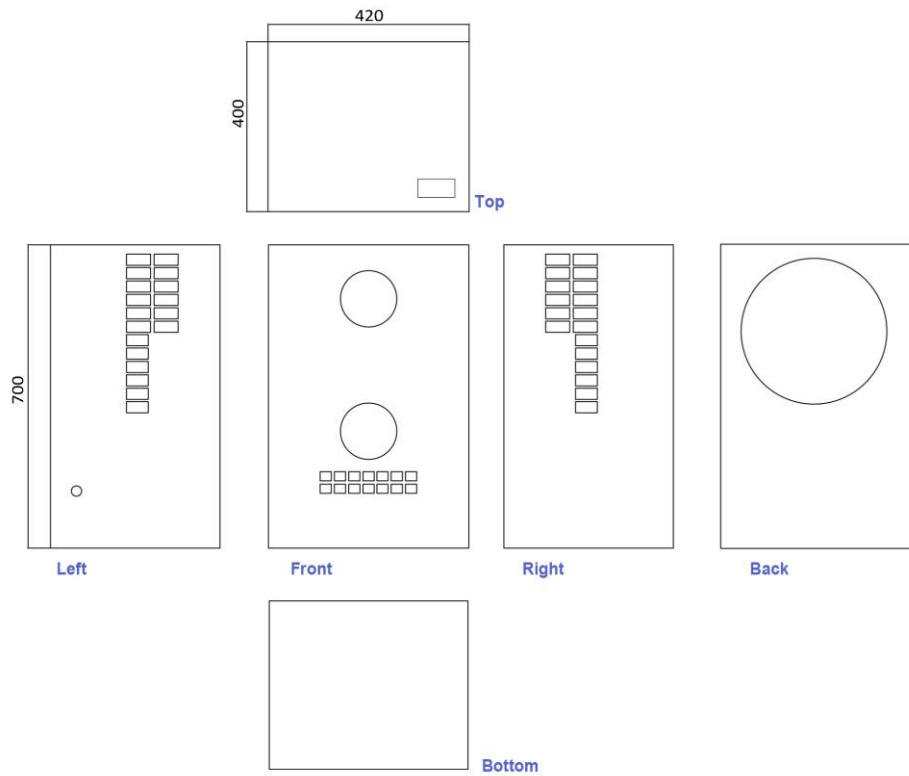
A – 2000 Technical drawings



Views



A – 4000 Technical drawings



Views

